

To: Kent Pension Board – 4 June 2026

From: Chairman Kent Pension Board  
Corporate Director - Finance

Subject: Employer Governance Matters

Classification: Unrestricted

---

### **Executive Summary:**

This report provides an update on Fund employers' governance, and admission matters.

An update is provided on the completed 31 March 2025 triennial valuation and completed Funding Strategy Statement.

Summary of key employer governance statistics and employer activity:

- The total number of employers in the Fund has increased from 465 to 469 over the quarter to 31 March 2026.
- Contribution income for this quarter totalled £89.9m.
- The Fund received an average of 99.6% of contributions measured by value and an average of 96.6% of contributions measured by employer on time during this quarter.
- A number of new admissions and exiting employer arrangements have been agreed by the Head of Pensions and Treasury as routinely reported to the Board and Committee, detailed in Appendix One issued on the Member Portal.

### **Recommendation:**

The Board is recommended to note the report.

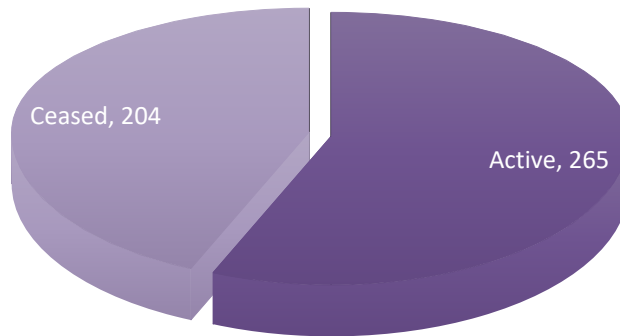
### **FOR INFORMATION**

---

#### **1 Employer update for the 3 months to 31 March 2026**

- 1.1 On 31 December 2025 there were 465 employers in the Fund. This number increased by 4 overall since then to 469 employers in the Fund on 31 March 2026.
- 1.2 During this period, 5 admitted bodies and 1 resolution body joined the Fund. 9 employers ceased (which does not affect the total number), 1 academy merged with another trust and 1 active employer was reclassified.

## Split of Employers between Active and Ceased



Type	New Employers	Effective Date
<b>Resolution Body</b>	Bekesbourne with Patrixbourne Parish Council	1 March 2026
<b>Admitted Body</b>	Principal Catering Consultants Ltd (re Turner Schools Trust formerly Inspira Academy Trust)	14 January 2026 (backdated to 01 April 2021)
<b>Admitted Body</b>	Principal Catering Consultants Ltd (re Aquila, The Diocese of Canterbury Academies Trust)	7 January 2026 (backdated to 01 September 2020)
<b>Admitted Body</b>	Sota Solutions Ltd (re Coastal Academies Trust)	25 February 2026 (backdated to 01 October 2025)
<b>Admitted Body</b>	Cucina Restaurants Ltd (re Leigh Academies Trust)	25 February 2026 (backdated to 01 March 2026)
<b>Admitted Body</b>	Ch & Co Catering Group Ltd (re Endeavour Multi Academy Trust)	4 February 2026 (backdated to 01 August 2024)

Type	Ceased Employers	Effective Date
<b>Admitted Body</b>	Wealden Leisure Ltd t/a Freedom Leisure Ltd	31 March 2026
<b>Admitted Body</b>	Principal Catering Consultants Ltd (re Turner Schools Trust formerly Inspira Academy Trust)	31 July 2024 (joined Fund on a backdated basis and contract had subsequently ended)

<b>Admitted Body</b>	Principal Catering Consultants Ltd (re Aquila, The Diocese of Canterbury Academies Trust)	31 July 2024 (joined Fund on a backdated basis and contract had subsequently ended)
<b>Admitted Body</b>	Principal Catering Consultants Ltd (re Kent County Council Schools)	31 July 2024 (cessation is incomplete due to the backdated nature of the admission)
<b>Admitted Body</b>	Pabulum Ltd (re Tenterden Schools Trust)	31 July 2025 (cessation completed 2 February 2026)
<b>Admitted Body</b>	Medway Community Healthcare CIC (re Balfour Centre)	31 March 2026
<b>Admitted Body</b>	Compass Contract Services UK Ltd (re The Stour Academy Trust)	31 July 2025 (cessation still in progress awaiting payment of deficit)
<b>Admitted Body</b>	Cater Link Ltd (re EKC Schools Trust, Briary Primary School)	18 April 2025 (cessation completed 22 April 2026)
<b>Admitted Body</b>	Agilisys Ltd	31 March 2026

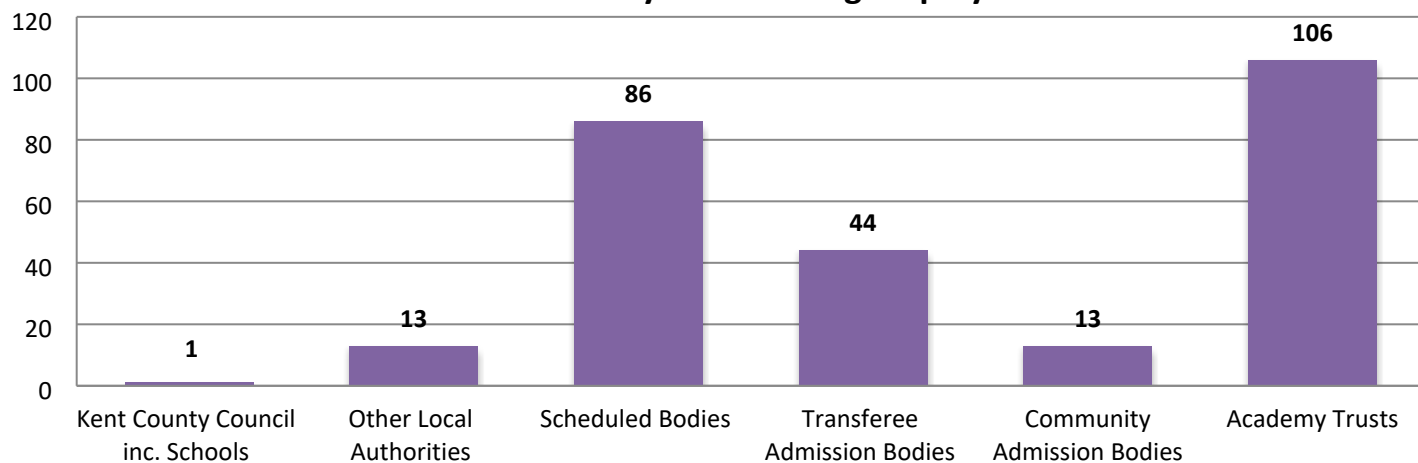
1.3 In quarter 4 the Fund received £89.9m in respect of monthly contributions (employer and employee) as follows:

	<b>Received Early</b>	<b>Received on 19<sup>th</sup></b>	<b>Received Late</b>	<b>Total</b>
	£	£	£	£
<b>January</b>	18,624,380.43	10,690,240.88	602,730.67	29,917,352
<b>February</b>	19,363,911.35	10,699,891.41	21,800.65	30,085,603
<b>March</b>	18,210,968.51	11,652,913.36	47,188.15	29,911,070

1.4 The £89.9m compares with contributions received for quarter 4 of 2024/25 of £84.8m as employer and employee membership will have changed and some employers have a stepped increase in their employer contributions.

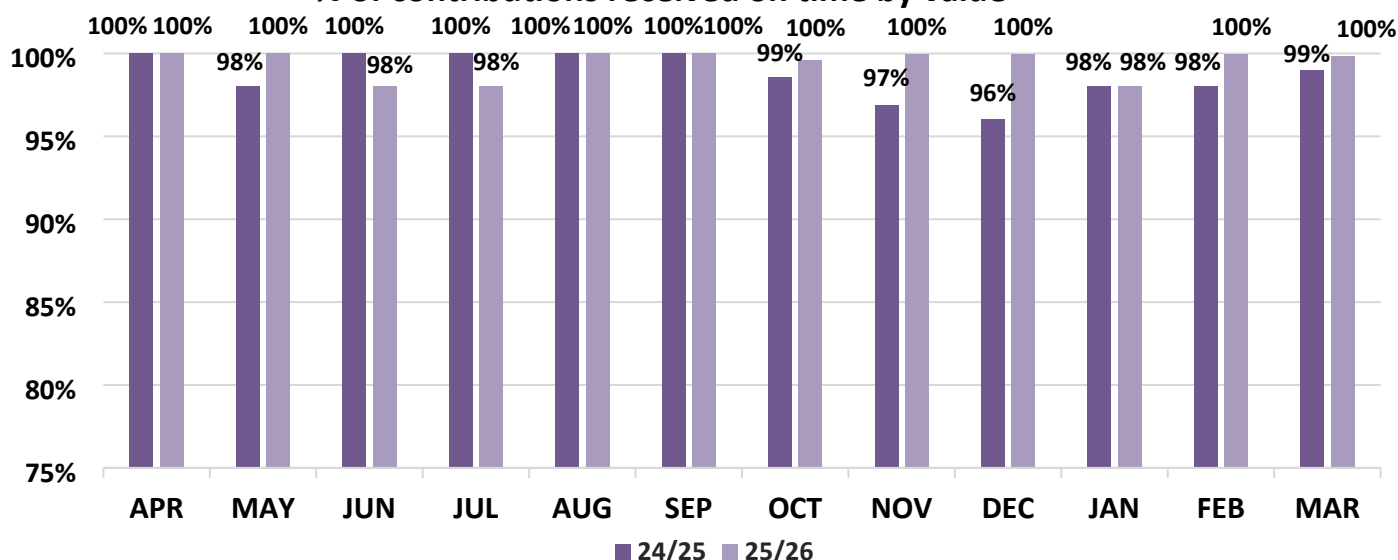
1.5 The following chart shows employers from whom the Fund receives monthly contributions by Employer Group. We note that two employers are not included, as they contribute annually.

### Breakdown of Monthly Contributing Employers



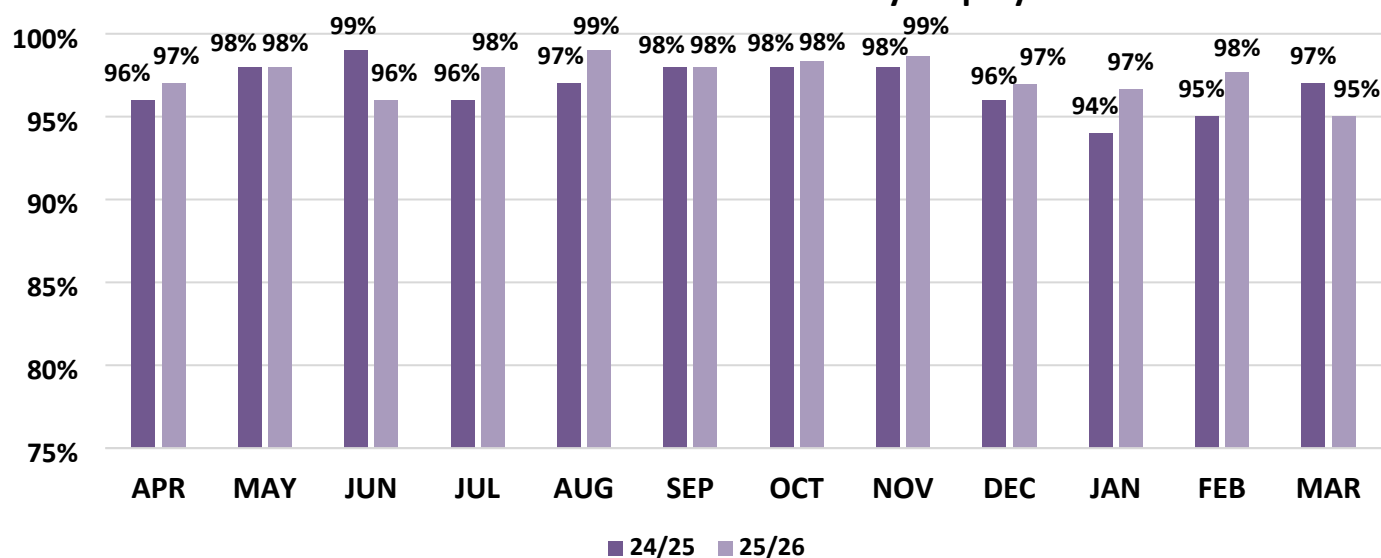
1.6 The following table shows the % of contributions received on time by value:

### % of contributions received on time by value



1.7 The following table shows the % of contributions received on time by employer:

### % of contributions received on time by employer



## **2 Triennial valuation update**

- 2.1 The draft final valuation report was shared with the Board at their March meeting. The final valuation report including its Rates and Adjustment Certificate as certified by Barnett Waddingham has been published on the [Fund's website](#)
- 2.2 All Fund employers have been notified of their individual valuation results or otherwise the results of their LGPS funding pool.
- 2.3 The next triennial valuation is due for 31 March 2028, with resultant employer contributions effective from 1 April 2029 to 31 March 2032.

## **3 Funding Strategy Statement (FSS) update**

- 3.1 As discussed at the Board's meeting in March further to a consultation with Fund employers and other interested parties, the Fund's proposed FSS was agreed by Committee at their meeting on 26 March 2026.
- 3.2 The FSS has been published on the [Fund's website](#), all employers and other interested parties informed by email and the Consultation Report has been published on the ['Let's Talk Kent' consultation platform](#)
- 3.3 The next FSS review and associated consultation is due in 2028/29 following the 31 March 2028 triennial valuation, although an earlier review and consultation is possible should the Fund wish to do so, for example as a consequence of the Government's New Fair Deal or Local Government Re-Organisation.

## **4 Employer admission and associated matters**

- 4.1 New employer admission cases and associated matters were agreed by Nick Buckland under Committee's delegated authority as detailed in Appendix One issued on the Member Portal.

### **Appendices:**

Appendix One - Employer admissions and associated matters

---

**Steven Tagg, Employers' Governance, Compliance and Funding Principal Accountant.**

**T: 03000 416747**

**E: [steve.tagg@kent.gov.uk](mailto:steve.tagg@kent.gov.uk)**

**14 May 2026**

---